




## Topics

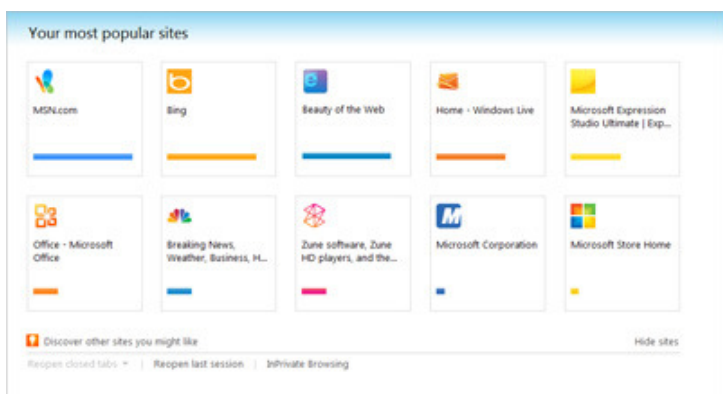
Use the New Browser Controls.....	1
New Tab Page .....	1
Show or hide the Favorites, Command, and status bars .....	2
Faster ways to get to your websites .....	2
Change and manage search providers .....	2
Manage Add-ons.....	3
Notification Bar .....	4
Top keyboard shortcuts.....	4
How to use Tracking Protection and ActiveX Filtering in Internet Explorer 9 .....	5
Compatibility View.....	5

## Use the New Browser Controls

The first thing you'll notice when you open Internet Explorer 9 is the simplified design. You can find most command bar functions, like Print or Zoom, when you click the Tools button , and your favorites and feeds appear when you click the Favorites button .

Tabs automatically appear to the right of the Address bar, but you can move them so they appear below the Address bar, as they did in previous versions of Internet Explorer. You can always show the Favorites, Command, Status, and Menu bars by right-clicking the Tools button , and then selecting them on a menu.

## New Tab Page



Manage your favorite sites with the New Tab page

Internet Explorer 9 surfaces the websites you love most and puts them one click away. Once you're in the browser, the New Tab page helps get you started browsing quickly, providing meaningful suggestions and information to help you decide what to do next as you browse.

To open the New Tab page, click the **New Tab** button or press CTRL+T. Each site's icon and primary color is used to help your more easily identify each site, which is helpful when you have many sites to choose from. Also, a site indicator shows if the site is one you visit often or not. Your favorite sites are shown with the sites you visit most frequently listed first. And if your taste in favorite sites changes over time, no problem—you can close them to remove them.

From the New Tab page you can also reopen closed tabs, reopen your last browser session, or start InPrivate Browsing. InPrivate sessions won't track page visits in the New Tab page. You can also pin sites from the New Tab page to the taskbar for quick access to your favorite sites.

### Show or hide the Favorites, Command, and status bars

Right-click an open space to the right of the **New tab** button, and then select a bar:

- **Favorites bar**
- **Command bar**
- **Status bar**

### Faster ways to get to your websites

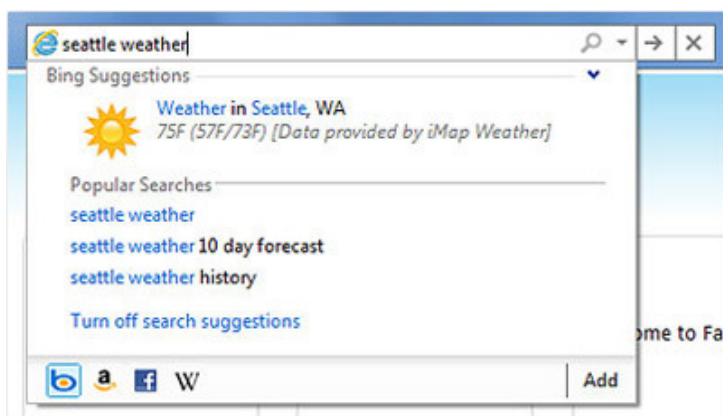
People have different ways to get the same things done. Some use the Start menu to get to their programs, while others like to use the taskbar or desktop shortcuts. Internet Explorer 9 has something for every preference, offering different ways to get to your favorite sites—fast.

- From One Box (formerly known as the address bar), you can pin a website by clicking the icon to the left of the web address and dragging it to the taskbar, the Start menu, or your desktop. Now your favorite sites are just a click away—you can launch the site without first having to open Internet Explorer.
- If you're already in the browser, open a new tab to see a selection of your favorite sites. To go to a site, just click it. Your favorite sites are always within easy reach.

### Change and manage search providers

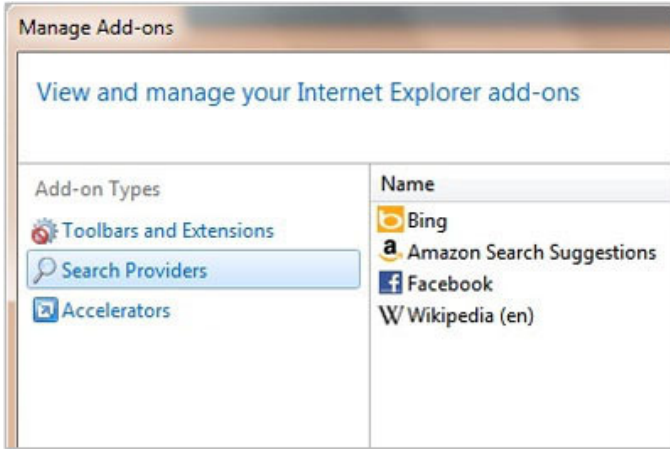
When you first install your browser, you might have only one search provider installed. But you might find that you want to use multiple providers, or switch your default provider. In Internet Explorer 9, you can add multiple search providers right from the Address bar.

To add providers, begin typing search terms in the Address bar. In the drop-down list that appears, click **Add**, and then choose the search providers you want to add. If you want the provider to offer search suggestions, be sure to select the **Use search suggestions from this provider** check box.



For each search provider you add, a button is displayed in the drop-down list from the Address bar. This makes switching between providers during a browsing session easy and fast. All you have to do is click a button to switch your search to that provider.

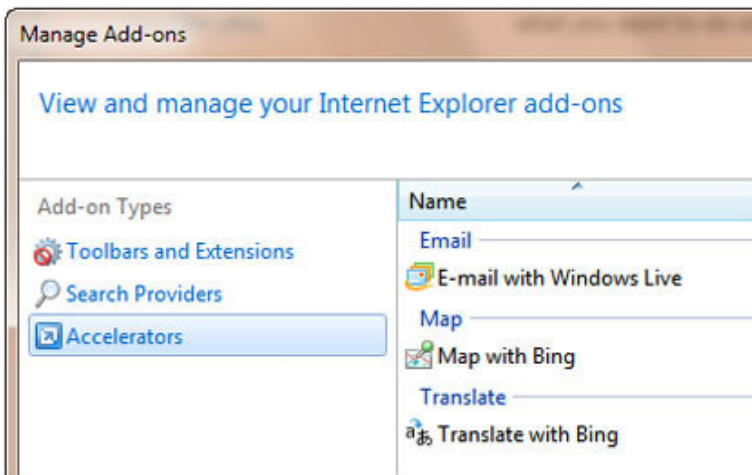
To change your default provider, remove a provider, switch the order of the buttons in the search box, or see what other management options are available, click the **Tools** menu, click **Manage Add-ons**, and then, under **Add-on Types**, click **Search Providers**.



## Manage Add-ons

When you use Internet Explorer 9, you might see notifications about different add-ons you've installed. In some cases, add-ons can affect the performance of your browser. These notifications can help you decide what you want to do with your add-ons.

Rather than waiting for notifications to alert you to add-ons and how they might be affecting your browser's performance, there's an easy way to view and manage all of your add-ons: Click the **Tools** menu, and then click **Manage Add-ons**.



Under **Add-on Types**, you'll see the different add-on categories. Select an add-on to see information like its name, publisher, version, and type in the details section of the window. Depending on the type of add-on it is, you can disable or enable it, or remove it entirely. Before you disable or remove an add-on, keep in mind that some webpages, or Internet Explorer itself, might not display correctly if certain add-ons are disabled.

To see other choices you have, like which columns to show or how to sort each type of add-on, right-click an add-on. You can also find more add-ons or learn more about each type using the links in the lower-left corner of the window.

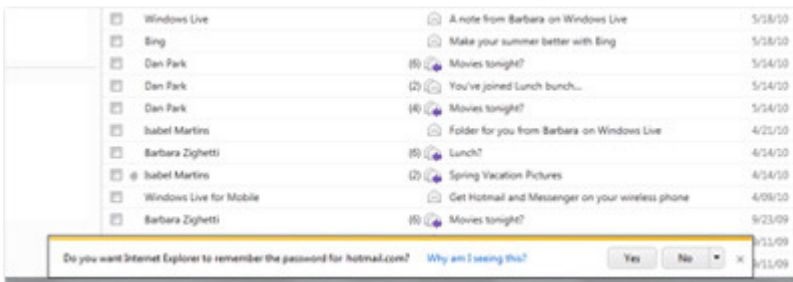
If you have a specific capability or function you'd like to add to Internet Explorer, the place to start is the Internet Explorer Add-ons gallery from Microsoft.

There are three basic types of Internet Explorer 8 Add-ons: Accelerators, Web Slices, and Search Providers. Accelerators react to highlighted text on a web page, using that text as the basis for an action. For example, the **Share on Facebook accelerator** posts any highlighted text (or a link to the entire web page) to your Facebook newsfeed. Web Slices track certain websites or social networks and return new or updated content in specific categories. For example, the **Digg Top 10 Web Slice** displays the top ten most popular stories from Digg's main page, and alerts you when that list changes. **Search Providers** add specific site or topic searches to the IE9 search box, allowing you, for example, to search just [eBay](#), [Amazon](#), or the [New York Times](#).

Now, before you go wild installing add-ons to your current version of IE, know that **there is a limit to the number of add-ons any given Internet Explorer installation can handle. The more you add -- especially if you exceed five add-ons -- the more unstable and crash-prone IE becomes.**

## Notification Bar

Notifications in Internet Explorer 9 allow for more fluid and faster browsing. Instead of dialog boxes popping up unexpectedly and getting in your way, all notification messages are consolidated in the Notification Bar, located at the bottom of the browser frame. Notifications won't interrupt your browsing by forcing you to act on them before you can continue. You can ignore them if you choose and act on them whenever you like. What's more, you'll find that the messages, error notifications, and warnings you see in the Notification Bar are more informative, easier to understand, and most importantly easier to act on.



## Top keyboard shortcuts

### Press this To do this

Alt Show the menu bar. After you make a selection, the menu bar goes away.

Alt+Home Go to your homepage.

Alt+C View your favorites, feeds, and browsing history.

Ctrl+J Open Download Manager.

Ctrl+L Highlight the text in the Address bar.

Ctrl+D Add a webpage to your favorites.

Ctrl+B Organize your favorites.

## How to use Tracking Protection and ActiveX Filtering in Internet Explorer 9

You can turn on Tracking Protection in Windows Internet Explorer 9 to help prevent websites from gathering information about your web browsing. You can also turn on ActiveX filtering to help prevent programs from accessing your computer without your consent.


Once you turn on either feature, you can turn it off for specific sites.

### Use Tracking Protection to block content from unknown websites

When you visit a website, some content might be provided by a different website. That content could be used to gather information about which pages you visit on the Internet.

Tracking Protection blocks this content from websites that appear on Tracking Protection Lists. There's a Personalized Tracking Protection List included with Internet Explorer that's generated automatically based on sites you visit. You can also download Tracking Protection Lists, and then Internet Explorer will periodically check for updates to the lists.

To turn on Tracking Protection

1. Open Internet Explorer.
2. Click the **Tools** button , point to **Safety**, and then click **Tracking protection**.
3. In the **Manage Add-on** dialog box, click a Tracking Protection list, and then click **Enable**.

To turn on ActiveX Filtering

1. Open Internet.
2. Click the **Tools** button , point to **Safety**, and then click **ActiveX Filtering**.

### Make exceptions for trusted websites

You can turn off Tracking Protection or ActiveX Filtering to show content on specific websites that you trust.

**To change Tracking Protection or ActiveX Filtering options for specific websites**

1. Open Internet Explorer
2. Navigate to a website.
3. Click the filter button in the Address bar, and then turn off or turn on available filtering options for the website.

## Compatibility View

Sometimes the website you're visiting doesn't look right. It shows up as a jumble of out-of-place menus, images, and text boxes. What's going on? One possible explanation: The site might have been designed for an earlier version of Internet Explorer. If Internet Explorer recognizes that the webpage isn't compatible, you'll see the Compatibility View button on the Address bar. Try clicking it.



The Compatibility View button

In Compatibility View, websites will be displayed as if you were viewing them in a previous version of Internet Explorer, which will often correct display problems. You don't need to click the button for a site after you've done it once—the next time you visit the site, Internet Explorer 9 will automatically show it in Compatibility View. (If you ever want to go back to browsing with Internet Explorer 9 on that site, just click the Compatibility View button again.)

**To add:**

<http://windows.microsoft.com/en-US/internet-explorer/help/ie-9/9-reasons-to-get-internet-explorer-9>

<http://windows.microsoft.com/en-US/internet-explorer/help/ie-9>

<http://windows.microsoft.com/en-US/internet-explorer/products/ie-9/features>

<http://windows.microsoft.com/en-US/windows7/Getting-started-with-Internet-Explorer-9>

<http://windows.microsoft.com/en-US/windows7/search?q=compare+ie+9+to+ie+8&prd=>

**IE 9 IS NOT compatible with Windows XP**