

Make Windows 7 or 8 Power Off USB Devices After Safe Removal

(For Experts only)

Last time we talked about whether or not it was a good idea to always safely eject USB devices before physically unplugging them. The conclusion was, yes, [you should always safely eject a USB device before you unplug it](#). But, now we've run into a new problem. Unlike with XP and older versions, in Windows Vista, Windows 7 and Windows 8, USB devices do not power off after being safely removed. While for most devices this is perfectly fine since the data connection has been broken, some devices you might want or need to be completely shut off before unplugging.



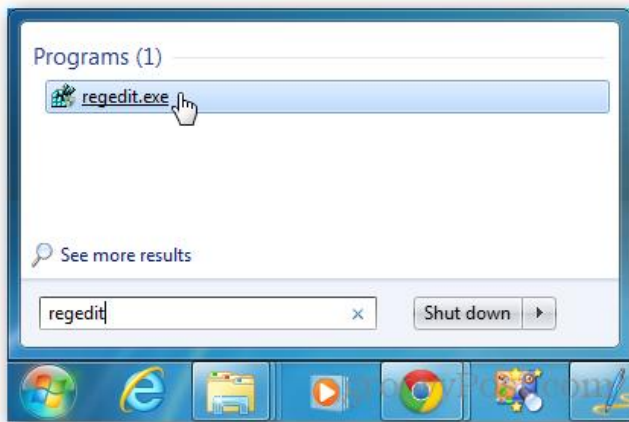
So with that said, you have 3 options.

1. Apply a global fix that shuts down every USB device after safe removal that ever connects to your computer.
2. Apply a fix on a device-by-device basis.
3. Leave it how it is. You probably don't need to worry about this fix unless you have a specific device or circumstance.

How to Apply a Global Setting for all USB device safely removed from your PC

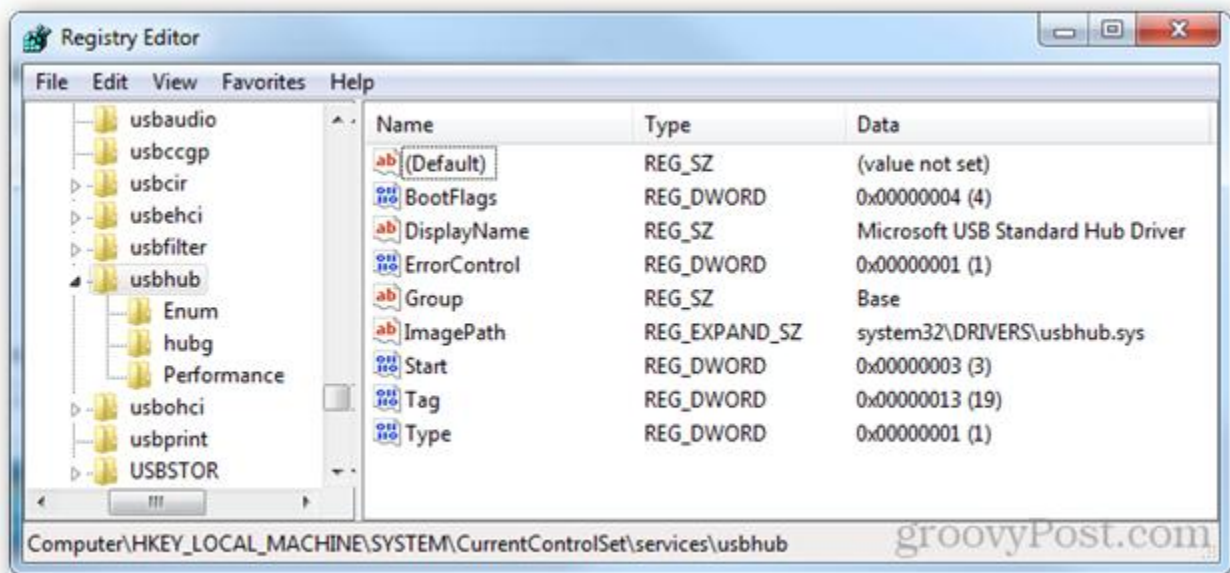
You can follow the manual instructions below, or just download this [global registry fix](#).

All of the settings we need to adjust can be found in the Windows registry. To get started open up regedit from the Start menu.

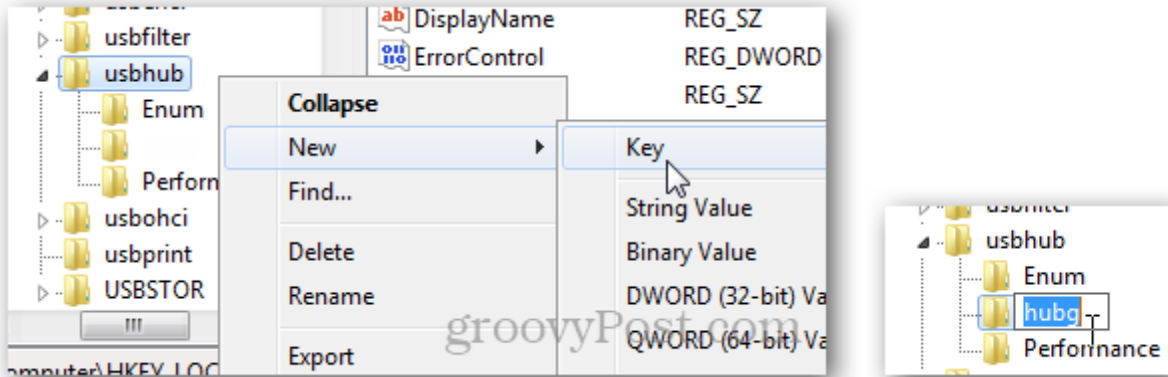


Browse to the following registry key:

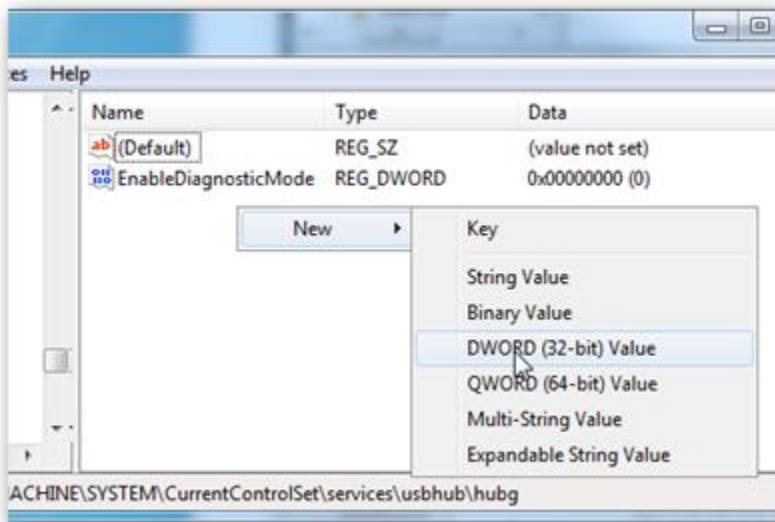
1HKEY_LOCAL_MACHINE\SYSTEM\CurrentControlSet\Services\usbhub



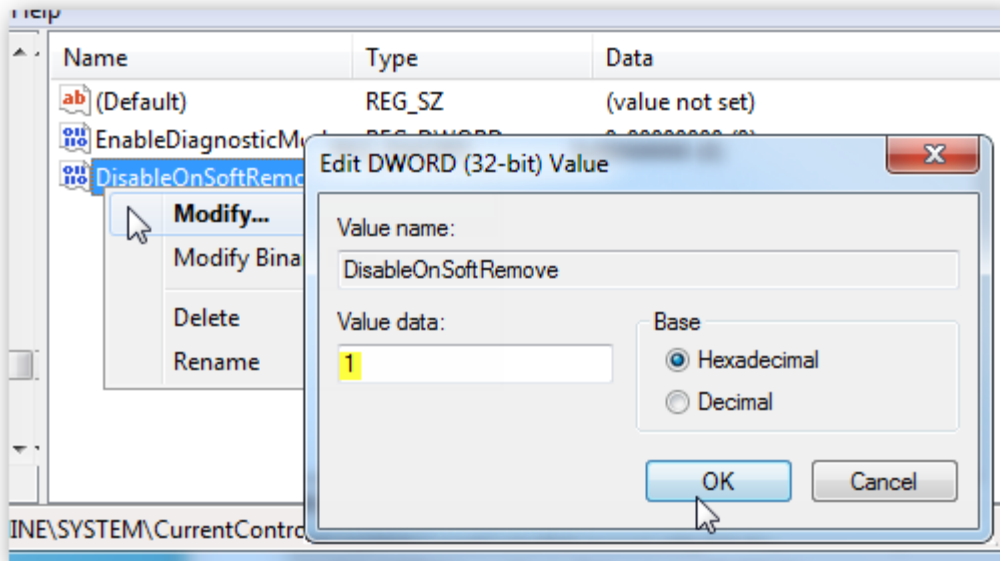
Within the usbhub key you need to enter another key called hubg. If this key isn't there, you can make one. Right click the usbhub folder select *New >> Key* and name it **hubg**.



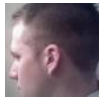
Now within hubg make a new DWORD (32-bit) called **DisableOnSoftRemove**. To do this right click the empty right pane and select *New >> DWORD (32-bit) Value*.



Now open up the new DWORD and change the value data to 1 – Hexadecimal. You can do this by double clicking the DWORD or right click it and selecting Modify. Click OK to save and exit.



That's it. Now you can power off USB devices without physically disconnecting them. For individual devices, see [this Microsoft help file](#).



[Austin Krause](#) is a groovyPost founding senior editor based in Washington D.C. Specializing in all things tech, email tips and other ideas to Austin@groovyPost.com.

http://www.groovypost.com/howto/windows-safely-remove-usb-devices-power-off/?awt_l=7XUGN&awt_m=3ZsYiXs2xoPlpMV