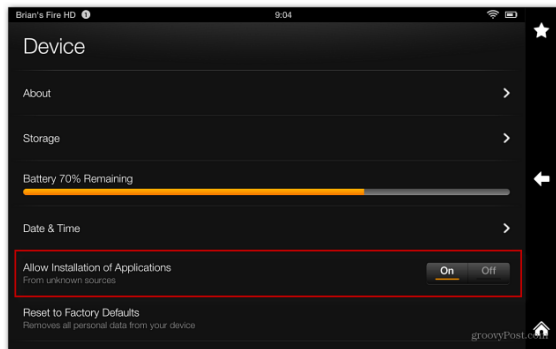


## How To Install YouTube on Kindle Fire HD

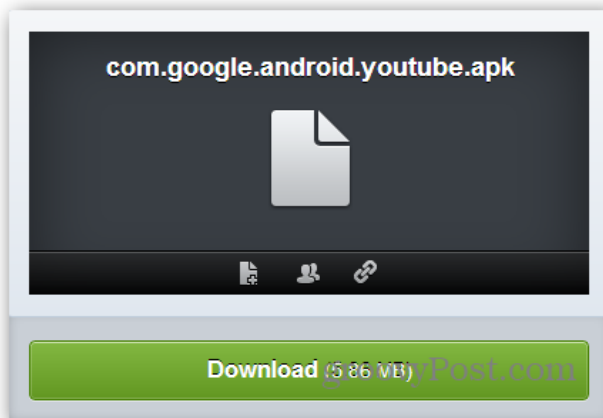
YouTube for Android isn't included or available for the Kindle Fire HD. The lack of common apps in the Amazon App Store one is one of its biggest disadvantages for users who want a "serious" Android tablet. Here's how to install the Android YouTube on the Kindle Fire HD – no rooting involved.

The omission of the YouTube app on a media consumption tablet doesn't make much sense. Obviously Amazon wants you to use its services, but it doesn't have anything like YouTube, so why isn't it there?

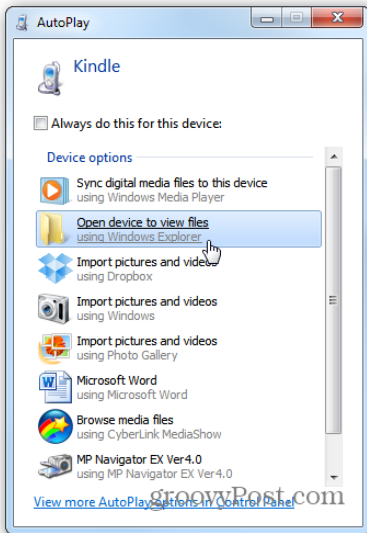
First make sure you have it set so you can sideload apps. Swipe down on the home screen and tap More than Device. Then turn on Allow Installation of Applications.



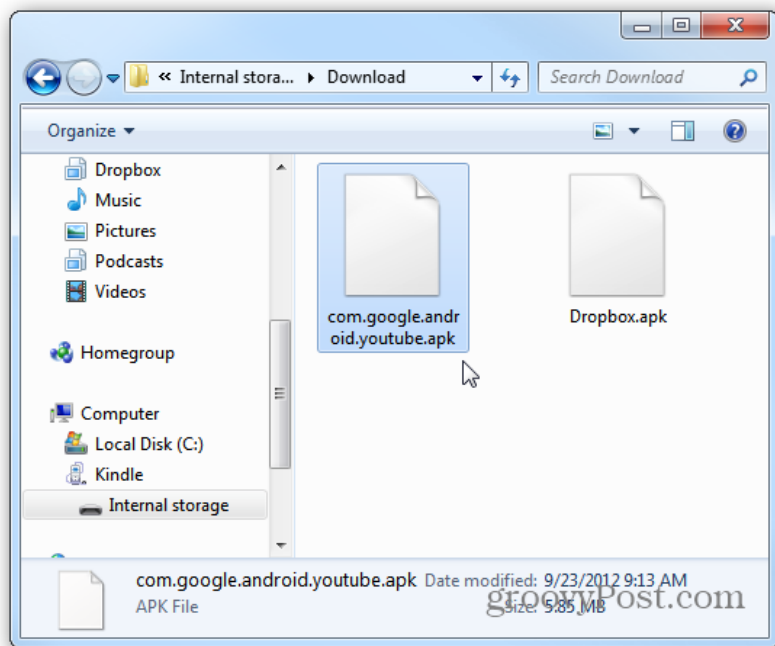
Now [download the youtube.apk](#) file to your PC.



After you've downloaded the file, connect your Kindle Fire HD tablet to your computer if it isn't already. When AutoPlay comes up click Open Device to View Files, or open it in Computer.



Go to the Download Folder and copy the APK file to it.



Next, install [ES File Explorer](#) on the Fire if it isn't already and open the Download folder.



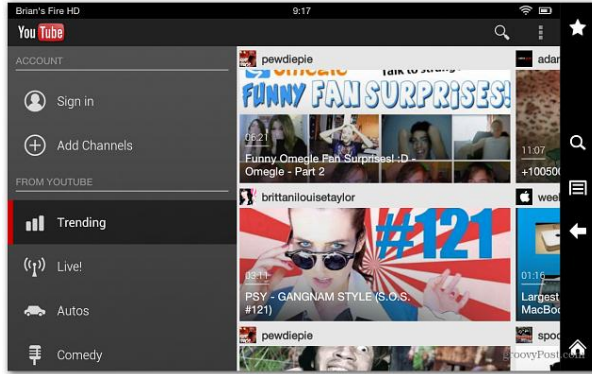
Tap the YouTube icon and follow the on screen instructions to install it.



The cool thing about installing YouTube is it will display an icon in Apps, unlike the [hidden Camera app](#).



There you go! You can now enjoy your favorite YouTube videos on the Kindle Fire HD.



Another app not included in the App Store is Dropbox. Check out this article on how to [install Dropbox on the Kindle Fire](#). Installing it on the new Fire HD is essentially the same process.



Based in MN, [Brian Burgess](#) is Editor in Chief at groovyPost. Got an idea or question? Email it to Brian at [Brian@groovyPost.com](mailto:Brian@groovyPost.com).

[http://www.groovypost.com/howto/install-youtube-kindle-fire-hd/?awt\\_l=7XUGN&awt\\_m=3eifFKjBooPlpMV](http://www.groovypost.com/howto/install-youtube-kindle-fire-hd/?awt_l=7XUGN&awt_m=3eifFKjBooPlpMV)