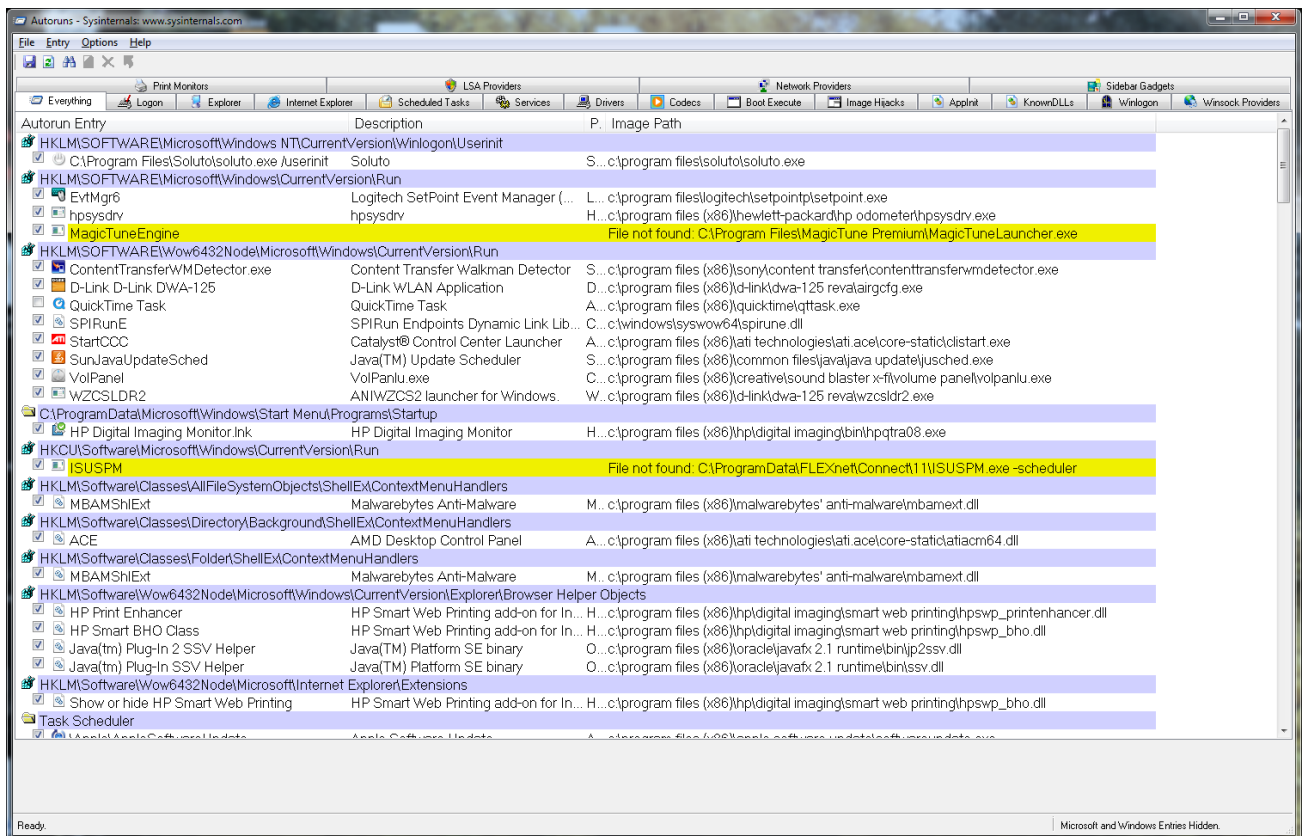


AUTORUNS.EXE and AUTORUNSC

This utility, which has the most comprehensive knowledge of auto-starting locations of any startup monitor, shows you what programs are configured to run during system bootup or login, and shows you the entries in the order Windows processes them. These programs include ones in your startup folder, Run, RunOnce, and other Registry keys. You can configure *Autoruns* to show other locations, including Explorer shell extensions, toolbars, browser helper objects, Winlogon notifications, auto-start services, and much more. *Autoruns* goes **way** beyond the MSConfig utility bundled with Windows.

Autoruns' **Hide Signed Microsoft Entries** option (under options), helps you to zoom in on third-party auto-starting images that have been added to your system and it has support for looking at the auto-starting images configured for other accounts configured on a system. Also included in the download package is a command-line equivalent that can output in CSV format, Autorunsc.



You'll probably be surprised at how many executables are launched automatically!

If you have questions or problems, visit the [Sysinternals Autoruns Forum](#).

Simply run *Autoruns* and it shows you the currently configured auto-start applications as well as the full list of Registry and file system locations available for auto-start configuration. Autostart locations displayed by Autoruns include logon entries, Explorer

add-ons, Internet Explorer add-ons including Browser Helper Objects (BHOs), Appinit DLLs, image hijacks, boot execute images, Winlogon notification DLLs, Windows Services and Winsock Layered Service Providers. Switch tabs to view autostarts from different categories.

I don't recommend that you do anything to your Registry files.

To view the properties of an executable configured to run automatically, select it and use the **Properties** menu item or toolbar button. If Process Explorer is running and there is an active process executing the selected executable then the **Process Explorer** menu item in the **Entry** menu will open the process properties dialog box for the process executing the selected image.

Navigate to the Registry or file system location displayed or the configuration of an auto-start item by selecting the item and using the **Jump** menu item or toolbar button. To disable an auto-start entry, uncheck its check box. To delete an auto-start configuration entry use the **Delete** menu item or toolbar button. Be very careful about deleting, and look up the file name first using a Google search.

Select entries in the **User** menu to view auto-starting images for different user accounts.